

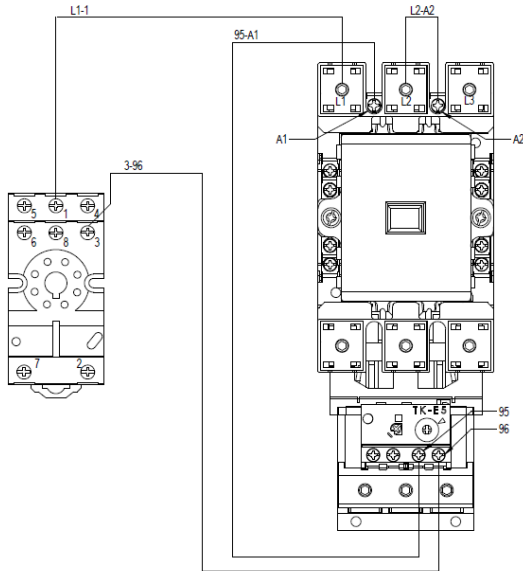
## Rinse Pump Motor Starter (Across-the-Line)

591085-XXX-HP - Rinse Pump Motor Starter - Across Line



Hydro-Chem, Inc.  
6605 Broadmoor Ave SE  
Caledonia, MI 49316

Office: (616) 531-6420  
e-mail: service@hcs-clean.com



Part Number	591085-230-50	591085-230-60	591085-460-50	591085-460-60	591085-575-60
<b>Voltage Rating</b>	460/480V 3PH 60Hz		460/480V 3PH 60Hz		575V 3PH 60Hz
<b>Pump Motor Rating</b>	50 HP	60 HP	50 HP	60 HP	
<b>Full-Load Amps</b>	130 A	154 A	65 A	77 A	62 A
<b>Short Circuit-Current Rating</b>	10kA				
<b>Enclosure Type</b>	4X				
<b>Conductor Size Min. Spec</b>	4 AWG		4 AWG		3 AWG
<b>Ground Size Min. Spec</b>	8 AWG		8 AWG		6 AWG
<b>Disconnect Rating</b>	No less than 200A		No less than 100A		No less than 80A
<b>Max Fuse</b>	K5/RK5 200A		K5/RK5 100A		
<b>Max Circuit Breaker</b>	200 A		100 A		
<b>Approx. Dimensions</b>	22.5"W x 23.5"H x 11.5"D		17.5"W x 19.5"H x 9"D		

### General Info

The purpose of this manual is to provide the necessary information to install and operate the Hydro-Chem equipment to exceed your defined expectation.

The Rinse Pump Motor Starter will come pre-wired and UL508a compliant. A schematic of the assembly and its torque specs may be found in the document holder within the enclosure and contractor wiring specs may be found within the document holder of the MCP.

## System Overview

Figure 1 outlines the overall layout of the Rinse Pump Motor Starter while Figure 2 shows the electrical schematic.

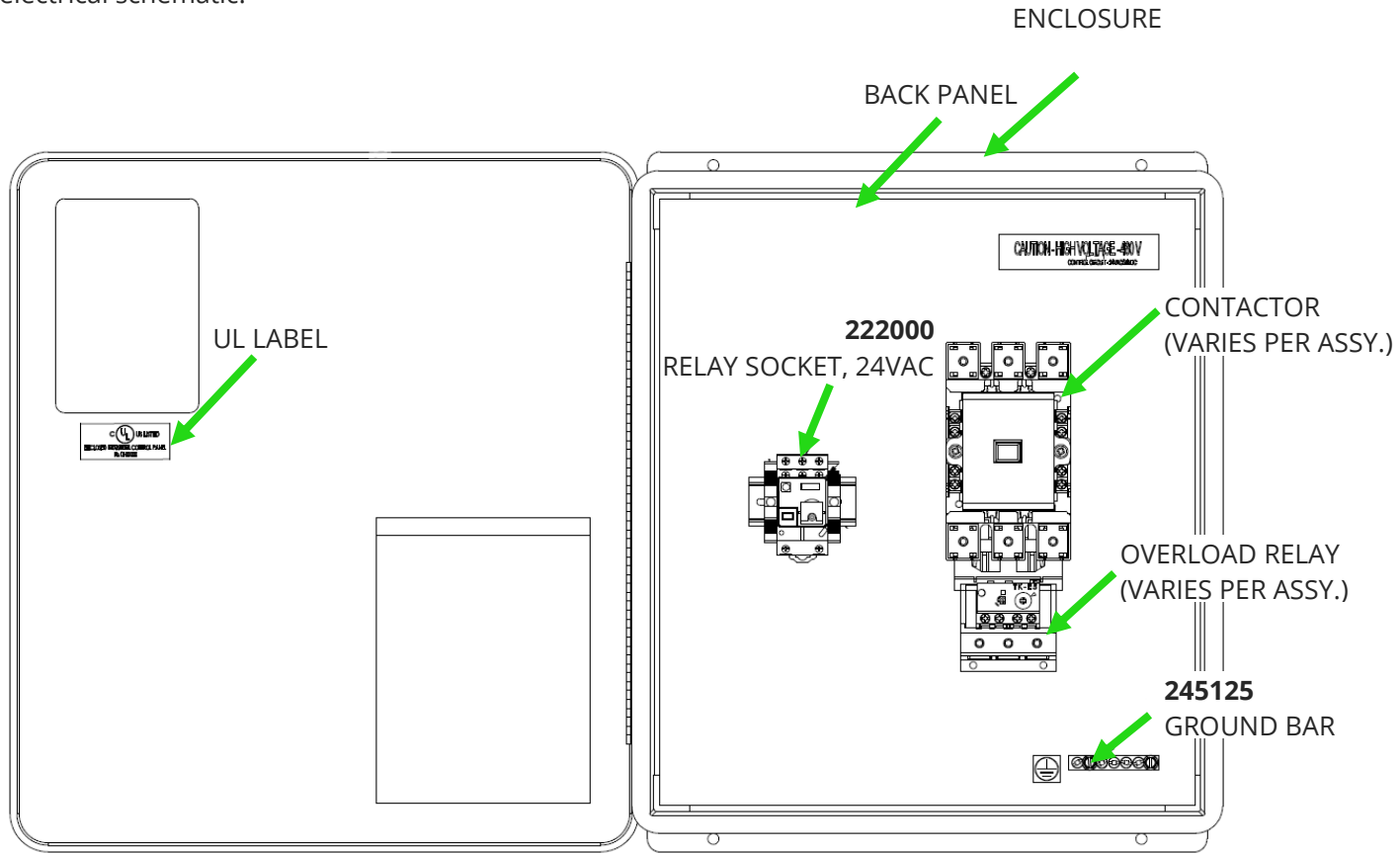


Figure 1. Motor Starter Assembly Layout

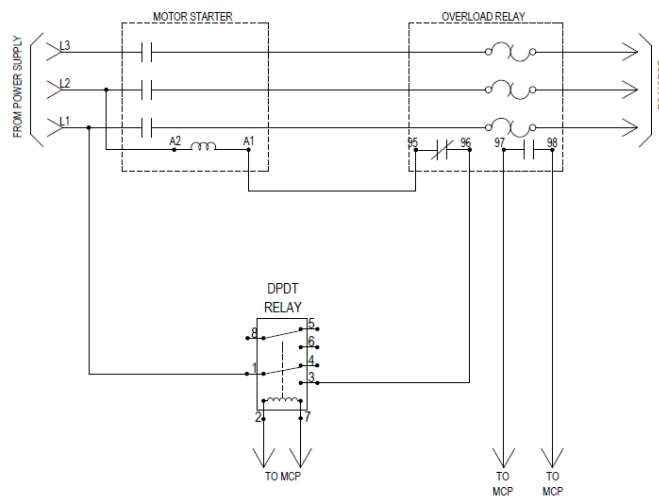


Figure 2. Motor Starter Electrical Schematic

## Installation & Set-Up

Typically, an electrician will prefer to mount this Motor Starter themselves so that they can meet local code requirements and plan their conduit lines. The Starter should be wired to the instructions within the Electrical Packet for the Automated System and per the requirements on the provided drawing for the Motor Starter.

When starting the system, ensure that the pump has proper rotation. If it does not, then the electrician shall reverse the legs of the 3 Phase power between the pump motor and the Starter to provide proper rotation. Next, ensure that all required wires from the MCP are landed in the Starter.

## Troubleshooting

Issue	Potential Solution
Rinse Pump not activating during wash	Are any System Stop buttons are pushed in? If not activate the starter in Test Mode.
	If this activates the starter, check that the system sees when the exit door is open (Monitor System on the MCP).
	If this does not activate the starter, check that the MCP has 24VAC where necessary and proceed to the next steps.
	Check that the overload hasn't tripped at the starter. This can also be seen on the Touch Screen. If the overload has tripped, reset it.
	Check that the 3Phase supply voltage isn't disconnected or that a breaker hasn't tripped.